

**Non-Contact  
Magnetostrictive Position Sensor**

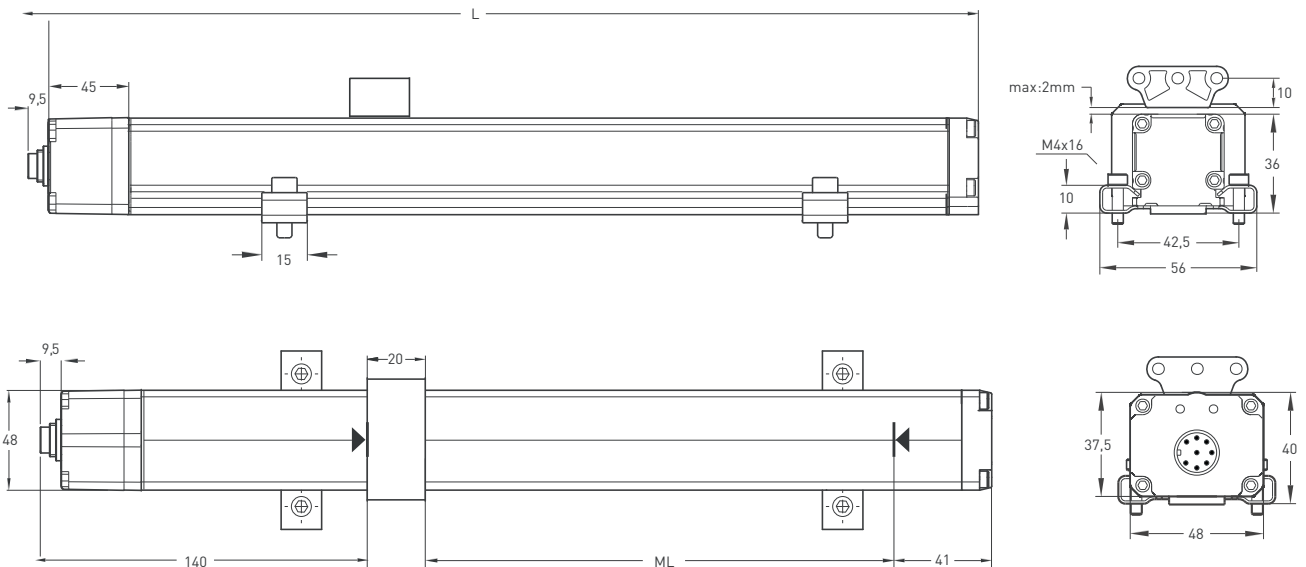


- Measuring length 100 - 5000 mm
- SSI protocol
- 24 VDC power supply
- 25µm (100mm-400mm),  
50µm (450mm-3000mm),  
100µm (4000mm-5000mm)



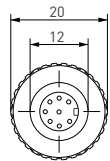
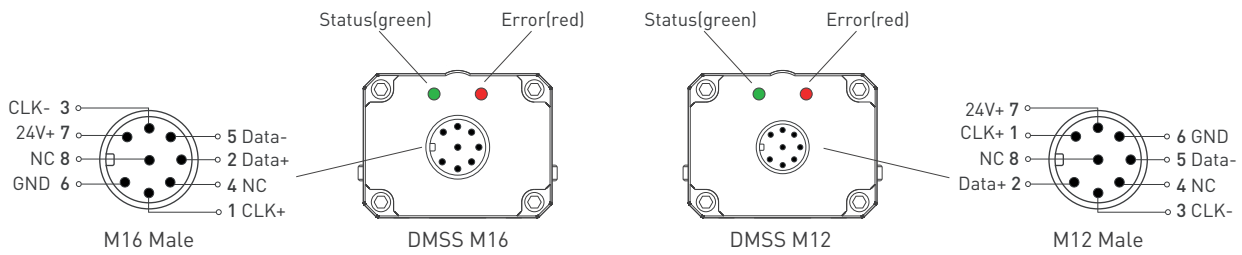
Technical Specifications	
Measurement stroke	100 - 5000 mm
Resolution	25µm (100mm-400mm), 50µm (450mm-3000mm), 100µm (4000mm-5000mm)
Repeatability	100 µm
Output	SSI
Power supply	24 VDC ±10%
Displacement speed	max. < 5 m/s
Sampling rate	Up to 2 KHz (depending on stroke length)
Max. consumption	<100 mA (depending on stroke length)
Linearity	100 mm < %1, 100-300 mm < %0.2, 300-500 mm < %0.1, 500-5000 mm > %0.05
Reverse polarity protection	Up to -30 VDC
Overvoltage protection	Up to +30 VDC
Update time	1 ms (at 1Mb/s)
Interface	RS422 / RS485 SSI - Gray SSI - Binary
Baud rate	max. 1Mbit sec.
Diagnostic LEDs	Green led : Power on, BUS communication active Red led : Error, Stop mode
Protection level	IP 65
Operating temperature	-10°C ... +70°C
Storage temperature	-30°C ... +90°C

**Mechanical Specifications**

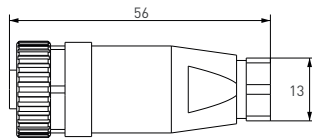


DMSS (mm)	100	150	200	250	300	350	400	450	500	550	600	650	700	750	800	850	900	1000	1100	1200	1300	1400	1500	1750	2000	2250	2500	3000	4000	5000
ML (Measuring Length)	100	150	200	250	300	350	400	450	500	550	600	650	700	750	800	850	900	1000	1100	1200	1300	1400	1500	1750	2000	2250	2500	3000	4000	5000
Total Length	301	351	401	451	501	551	601	651	701	751	801	851	901	951	1001	1051	1101	1201	1301	1401	1501	1601	1701	1951	2276	2526	2776	3296	4316	5316
Dead Zone Calculation	140/41																													

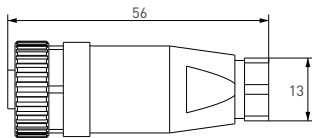
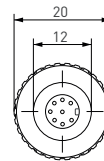
## Connection



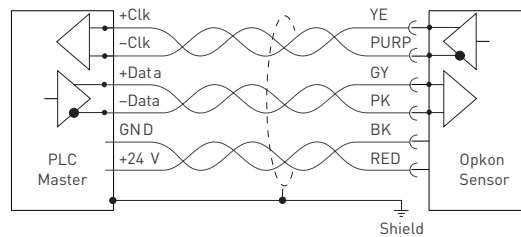
M16 Female



CABLE	
Yellow	CLK +
Grey	DATA +
Purple	CLK -
Brown-Green	NC
Pink	DATA -
Red	24V +
Green-White	NC
Black	GND

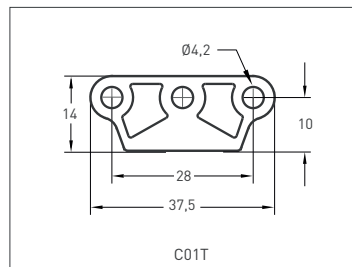


M12 Female



Cable Connection

## Cursor



## Ordering Procedure

Model	Measurement stroke	Protocol	CRC-Check	Format	Data-length	Cursor	Connecting brackets	Connector / Cable	Dead Zone
DMSS	150	SSI	0	G	16 D	C01T	BR02	CN8B	140/41
DMSS	100 - 5000 mm	SSI : SSI	0: No CRC 5: 5 bit CRC 6: 6 bit CRC 16: 16 bit CRC	G: Grey B: Binary	16 D 24 D 25 D 26 D	1C01T: 1 cursor 2C01T: 2 cursors	BR01 BR02	1M : 1 meter 2M5 : 2,5 meter 5M : 5 meter CN8A : M12 CN8B : M16	≤ 2000 mm 140/41 > 2000-3000 mm 215/41 > 3000-4000 mm 235/41 > 4000-5000 mm 255/41

\* T-coded sensors are used with T-coded cursors.