

# SMAP

Washable

RoHS Compliant

## Surface Mount Pushbutton Switches



### Features

- Compatible with Reflow Soldering
- Washable
- Gold-Plated Contacts for Low Current Application
- Clip Contact Mechanism for High Contact Reliability

### Specifications

Rating	Max.	0.4VA (28VDC max.) (Resistive load)
	Min.	1 $\mu$ A 20mVDC (Resistive load)
Initial contact resistance	100m $\Omega$ max. (1.5mA 200 $\mu$ VAC)	
Dielectric strength	250VAC 1minute	
Initial insulation resistance	500M $\Omega$ min. (250VDC)	
Stroke	1.4mm	
Operating force	1.47 $\pm$ 0.98 N	
Electrostatic capacity	5pF max.	10,000 operations at max. rating
Electrical life	30,000 operations at min. rating	
Switch timing	Non-shorting	
Operating temperature range	-20 $\sim$ +80 $^{\circ}$ C	
Storage temperature range	-40 $\sim$ +80 $^{\circ}$ C	

### Table of Part Numbers

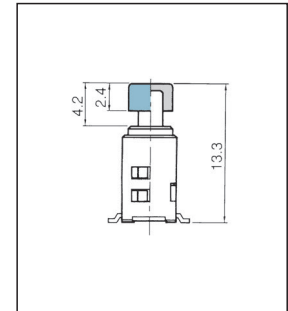
Packaging specifications	Terminal styles	Switching function	Poles	
			1 pole	2 poles
Stick	PC	ON-(ON)	SMAP1F-2M-Z	SMAP2F-2M-Z
	Right-angle	ON-(ON)	SMAP1F-5M-Z	SMAP2F-5M-Z
Emboss tapping	Right-angle	ON-(ON)	SMAP1F-5M-E-Z	—

### Optional Accessories

(Sold separately)

Color Cap	
White	140000481453
Red	140000481452
Black	140000481451
Gray	140000481450

### Color Cap Mounting



### Packaging Specifications

Emboss tapping		Stick		
		500 pcs/reel	PC 	R/A 
			$l = 570$ 50pcs/stick	$l = 570$ 50pcs/stick

(ON) : Momentary.

