

N 813 SERIES VACUUM PUMPS



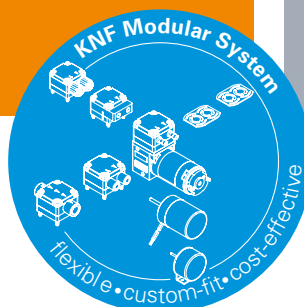
N 813.4 ANDC-B

ADVANTAGES

- High-speed evacuation of the measurement chamber thanks to exceptional suction speed
- High flow rate in deep vacuum
- Stable and deep final vacuum

POSSIBLE AREAS OF USE

- Can be used as roughing pump for turbomolecular pumps
- Instrumental analysis
- Analytical technology – especially in the field of spectroscopy
- Used in helium leak detectors



Please visit our website
www.knf.com
to get more information

PERFORMANCE DATA				
Series model	N 813.3		N 813.4	
Material design	ANDC-B	AN.29 DC-B	ANDC-B	AN.29 DC-B
Pump head	Aluminium			
Diaphragm	EPDM			
Valve	EPDM			
Flow rate at atm. pressure (l/min)	13.0	4.2–13.0	13.0	3.5–13.0
Ultimate vacuum (mbar abs.)	3		0.5	
Max. operating pressure (bar rel./psig)	1.0			
Permissible ambient temperature (°C)	+5 ... +40			
Permissible media temperature (°C)	+5 ... +40			
Weight (kg/lbs)	2.3/5.1		3.8/8.4	
ELECTRICAL DATA				
Voltage (V)	24		24	
Motor	Brushless DC motor		Brushless DC motor	
Protection class motor	IP 20		IP 20	
Frequency (Hz)	-		-	
Power P ₁ (W)	35.0		65.0	
I _{max} (A)	1.50		2.70	

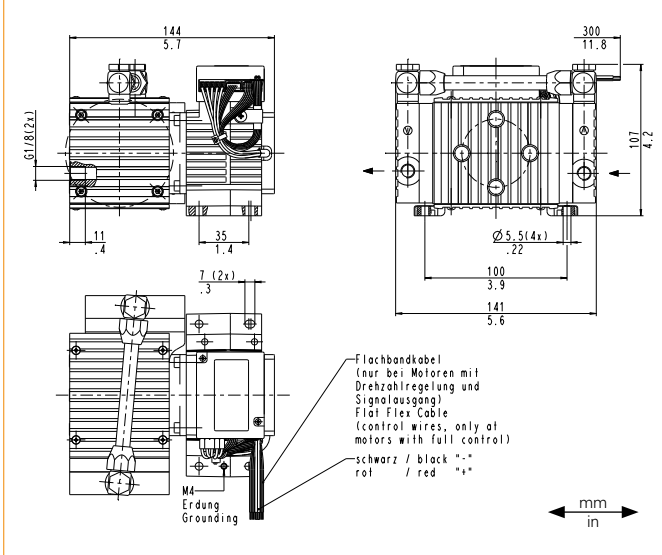
N 813.3 ANDC-B | AN.29 DC-B

PERFORMANCE DATA

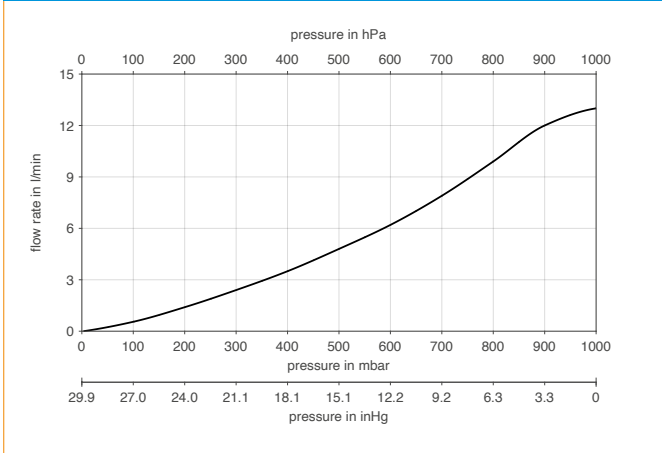
Series model	Flow rate at atm. pressure (l/min) ¹⁾	Max. operating pressure (bar rel./psig)	Ultimate vacuum (mbar abs.)
N 813.3 ANDC-B	13.0	1.0/14.5	3
N 813.3 AN.29 DC-B	4.2–13.0	1.0/14.5	3

¹⁾ Liter at STP

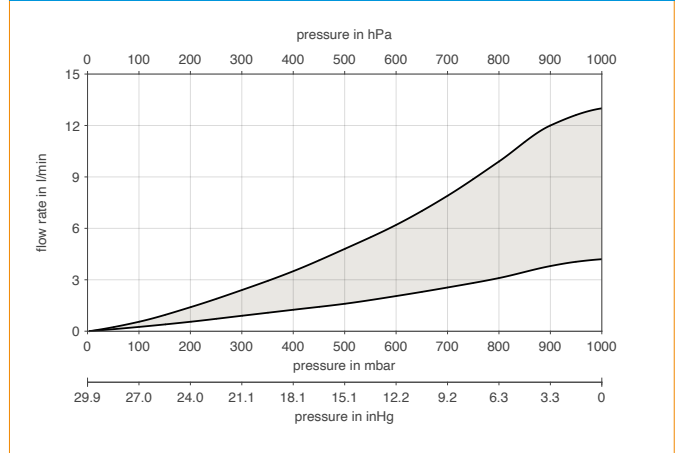
N 813.3 ANDC-B | AN.29 DC-B



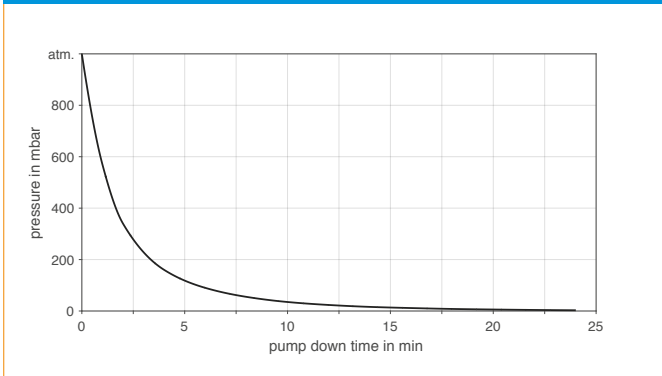
N 813.3 ANDC-B



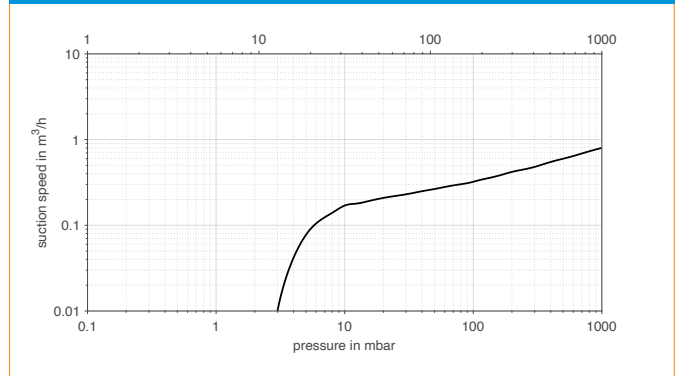
N 813.3 AN.29 DC-B



N 813.3 ANDC-B | AN.29 DC-B | PUMP DOWN TIME FOR 20 LITER VESSEL



N 813.3 ANDC-B | AN.29 DC-B | SUCTION PUMPING SPEED



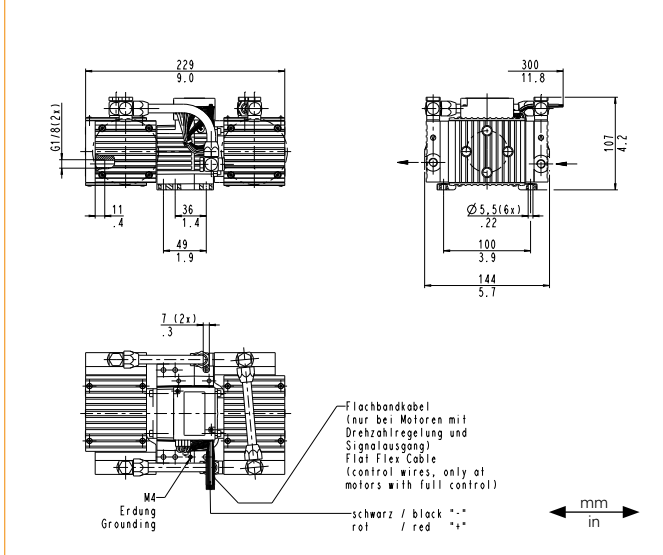
N 813.4 ANDC-B | AN.29 DC-B

PERFORMANCE DATA

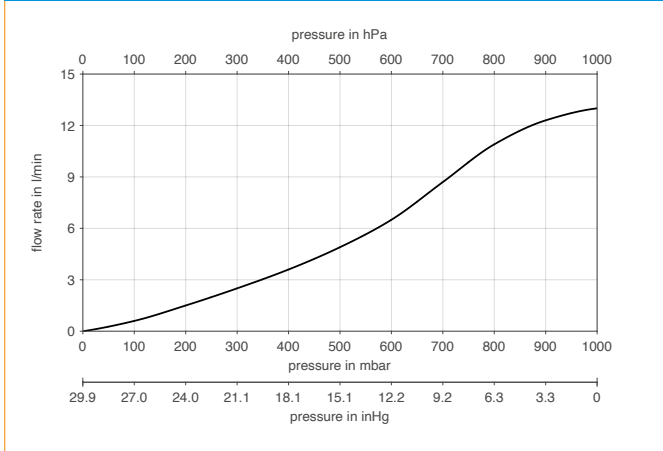
Series model	Flow rate at atm. pressure (l/min) ¹⁾	Max. operating pressure (bar rel./psig)	Ultimate vacuum (mbar abs.)
N 813.4 ANDC-B	13.0	1.0/14.5	0.5
N 813.4 AN.29 DC-B	3.5–13.0	1.0/14.5	0.5

¹⁾ Liter at STP

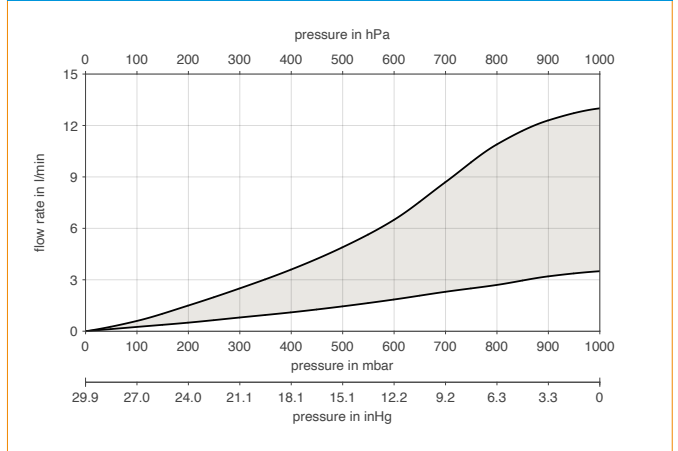
N 813.4 ANDC-B | AN.29 DC-B



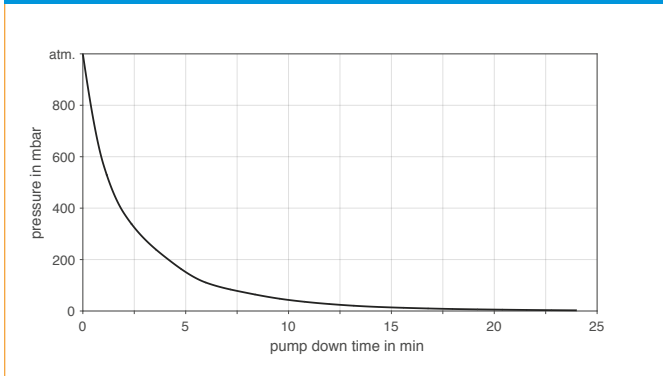
N 813.4 ANDC-B



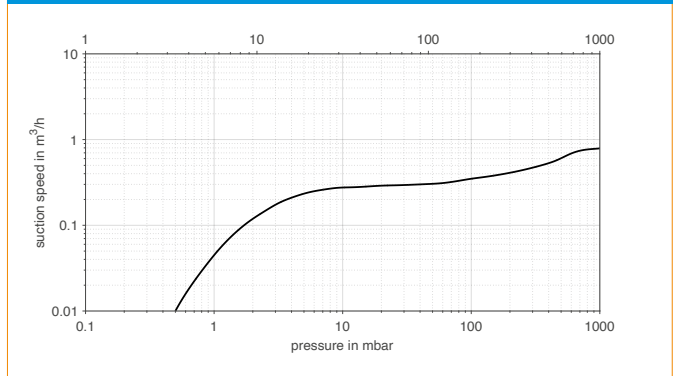
N 813.4 AN.29 DC-B





N 813.4 ANDC-B | AN.29 DC-B | PUMP DOWN TIME FOR 20 LITER VESSEL





N 813.4 ANDC-B | AN.29 DC-B | SUCTION PUMPING SPEED



ACCESSORIES

Description	Illustration	Part No.	Details
Silencer		000346	G 1/8
Hose connector		005148	G 1/8
Small flange		042191	G 1/8, DN 10
Gasket		026906	for G 1/8

SPARE PARTS

Description	Illustration	Part No.	Details
Spare parts kit N 813.3 AN for 2 pump heads		032494	Spare parts kit consists of: 2x structured diaphragm, 4x valve plate, 4x sealing ring. This set is required to maintain the pump.
Spare parts kit N 813.4 AN for 4 pump heads		343346	Spare parts kit consists of: 4x structured diaphragm, 8x valve plate, 8x sealing ring. This set is required to maintain the pump.
Pneumatic connection .3		024723	
Pneumatic connection .4		024722	

The performance values for the series models shown on this data sheet were determined under test conditions. The actual performance values may differ and depend in particular on the usage conditions and therefore on the specific application, on the parameters of the components involved in the user's system and on any technical modifications carried out which deviate from the standard configuration or the as delivered condition.

If individual designs have been created for specific customers on the basis of series models, other technical performance data may apply. Before operation begins, the relevant operating instructions and/or assembly or installation instructions should be read and the safety information contained in these instructions should be noted. KNF reserves the right to make changes to the product and the associated documentation without prior notice to the customer.



www.knf.com