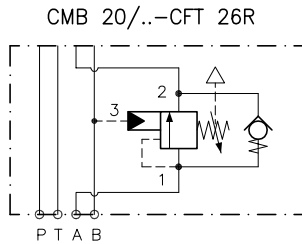
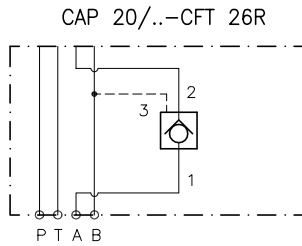
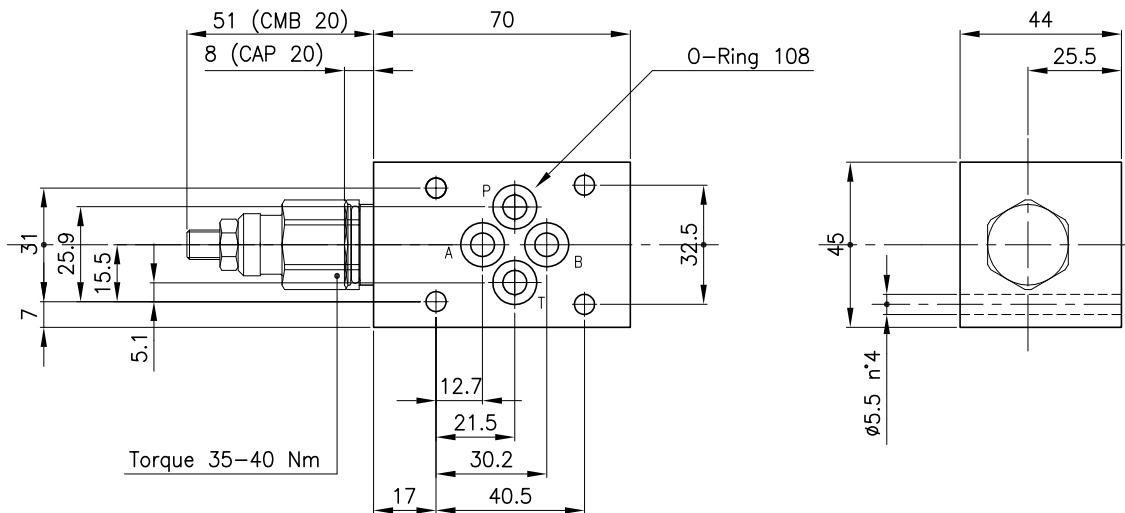


**Schema**



Valve	(For features see catalogue 05.100)	CAP 20
	(For features see catalogue 07.090)	CMB 20
Cavity	(For dimensions see catalogue 17.000)	S 20/3
Max. flow	(l/min.)	25
Max. pressure	(bar)	210
Fluid viscosity range	(cSt)	2.8 - 380
Fluid temperature range	(°C)	-20 +80
Mass (aluminium body only)	(kg)	0.380
Hydraulic fluid; mineral oil HM and HV ISO 6074		
Recommended filtration; 19/15 ISO 4466 (25 μ absolutes)		
Standard seals in Polyurethane and Buna N		
Standard body in aluminium		

**Dimensions**



**Versions**

**20-CFT 26R**

Size

Body:

20-CFT 26R

28 147 271

Version