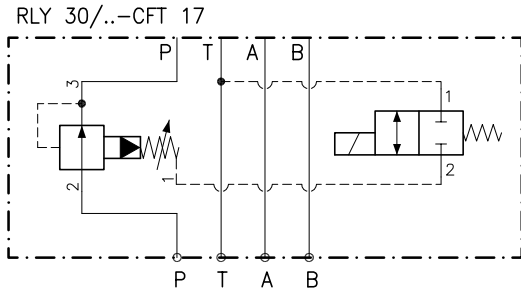
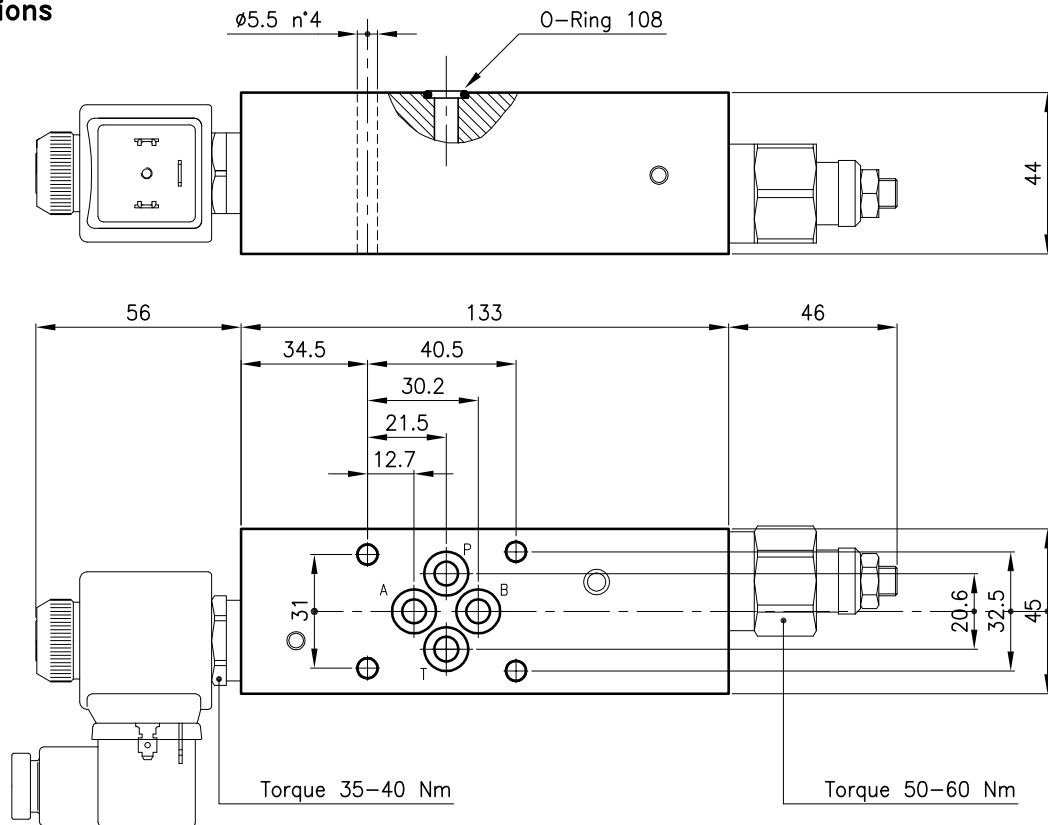


Schema



Valves	(For features see catalogue 03.030)	RLY 30
	(For features see catalogue 09.010)	ETD 20
Cavity	(For dimensions see catalogue 17.000)	S 30/3
		S 20/2
Max. flow	(l/min.)	40
Max. pressure	(bar)	210
Fluid viscosity range	(cSt)	2.8 - 380
Fluid temperature range	(°C)	-20 +80
Mass (aluminium body only)	(kg)	0.750
Hydraulic fluid; mineral oil HM and HV		ISO 6074
Recommended filtration; 19/15 ISO 4466 (25 μ absolutes)		
Standard seals in Polyurethane and Buna N		
Standard body in aluminium		

Dimensions



Versions

30-CFT 17

Size

Version

Body:

30-CFT 17

38 147 268