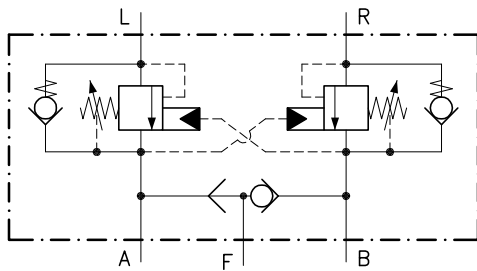
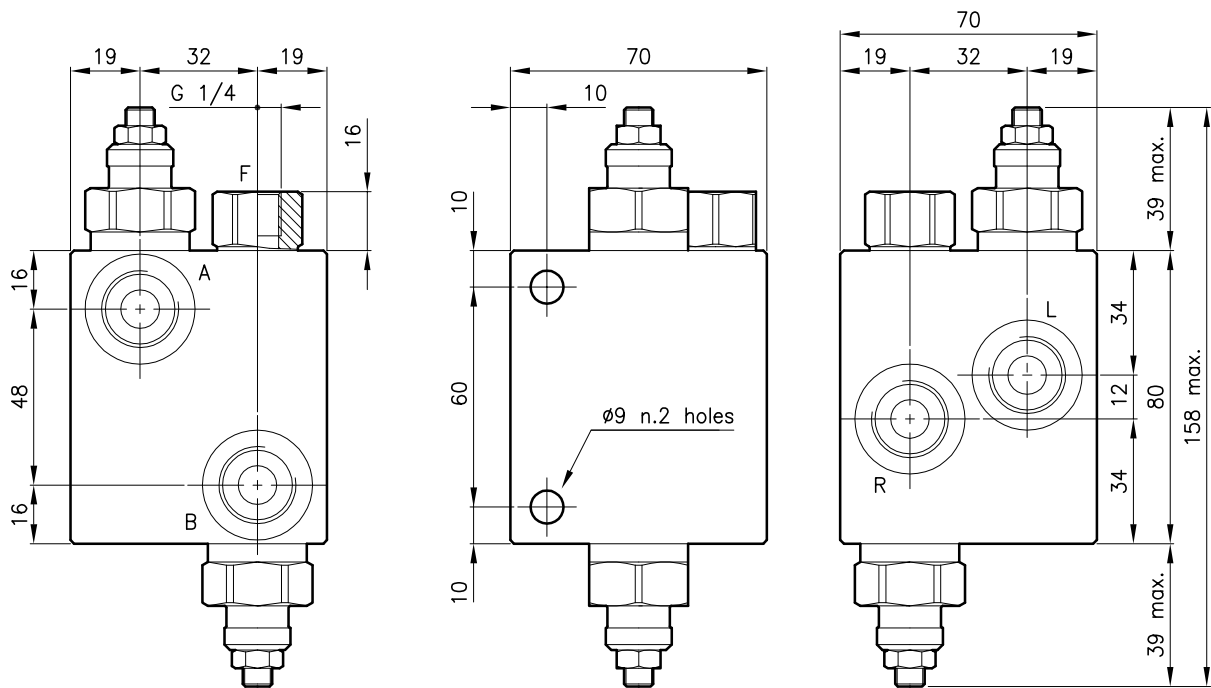


Technical features



Valve	(For features see catalogue 07.060)	CMQ 30
Valve	(For features see catalogue 05.320)	CCE 20
Max. flow	(l/min.)	50
Max. system pressure	(bar)	315
Max. setting pressure	(bar)	420
Pilot ratio		8:1
Fluid viscosity range	(cSt)	2.8 - 380
Fluid temperature range	(°C)	-20 +80
Mass	(kg)	1.210

Dimensions



Ordering informations

CMQ 30/T-L-CSL 26-B08

CMQ 30 = Valve type

Standard springs

Type	Setting range	Factory set
D	25 - 125 bar	105 bar
T	105 - 420 bar	280 bar

Adjustment type

L = Adjustment with overset protection

Version with shuttle valve

Standard ports

B06 = G 3/8 ISO 228

B08 = G 1/2 ISO 228

Codes:

CMQ 30/D-L-CSL 26-B06	34 011 143
CMQ 30/T-L-CSL 26-B06	34 011 144
CMQ 30/D-L-CSL 26-B08	34 011 145
CMQ 30/T-L-CSL 26-B08	34 011 146

Only bodies code:

Body type 30-CSL 26-B06	38 144 197
Body type 30-CSL 26-B08	38 144 198