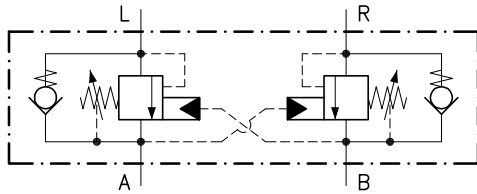
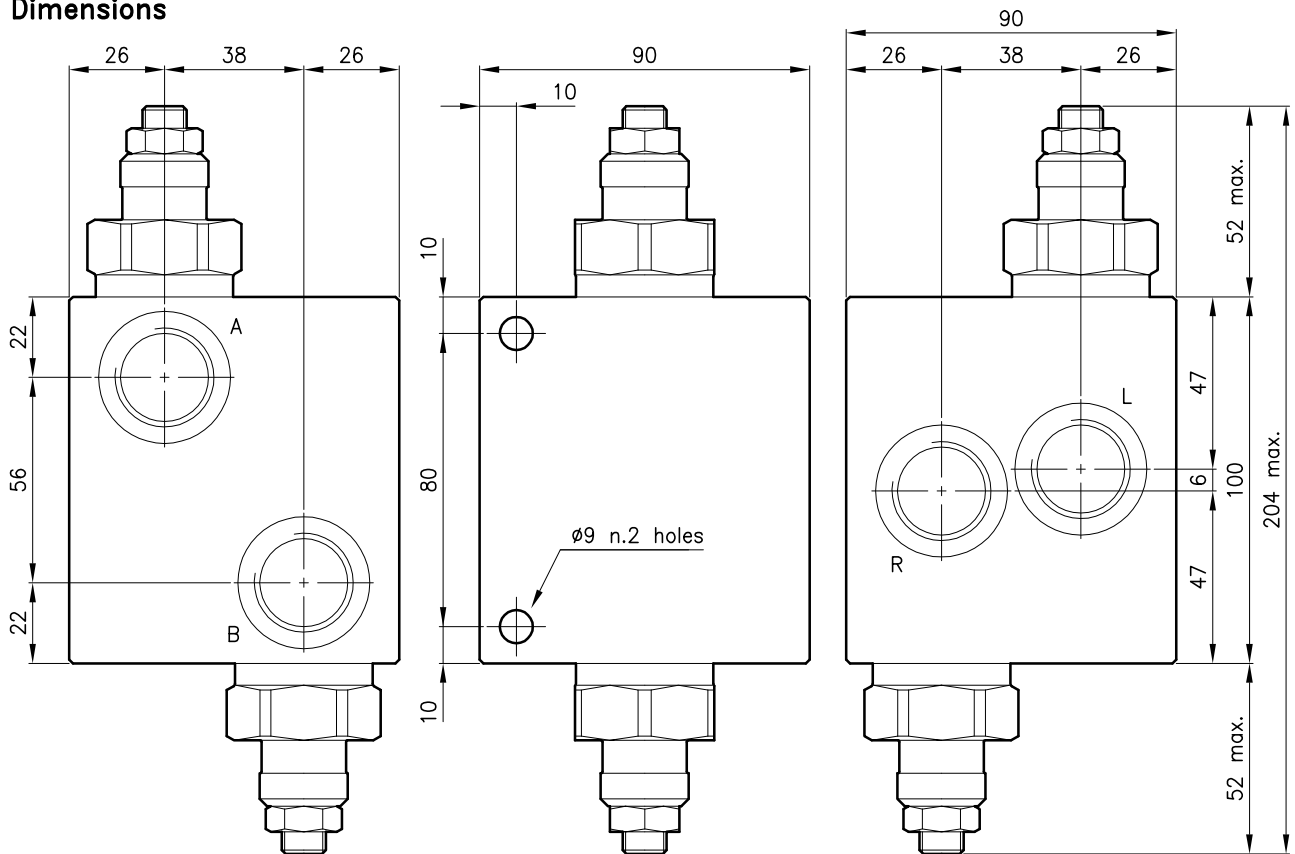


**Technical features**



Valve	(For features see catalogue 07.070)	CMQ 50
Max. flow	(l/min.)	90
Max. system pressure	(bar)	315
Max. setting pressure	(bar)	420
Pilot ratio		8:1
Fluid viscosity range	(cSt)	2.8 - 380
Fluid temperature range	(°C)	-20 +80
Mass	(kg)	3.300

**Dimensions**



**Ordering informations**

**CMQ 50/T-L-CSL 25-B08**

CMQ 50 = Valve type

Standard springs

Type Setting range Factory set

**D** = 25 - 125 bar 105 bar

**T** = 105 - 420 bar 280 bar

Adjustment type

**L** = Adjustment with oversight protection

Version

Standard ports

**B08** = G 1/2 ISO 228

**B12** = G 3/4 ISO 228

Codes:

CMQ 50/D-L-CSL 25-B08 54 011 107

CMQ 50/T-L-CSL 25-B08 54 011 108

CMQ 50/D-L-CSL 25-B12 54 011 109

CMQ 50/T-L-CSL 25-B12 54 011 110

Only bodies code:

Body type 50-CSL 25-B08 58 144 134

Body type 50-CSL 25-B12 58 144 135