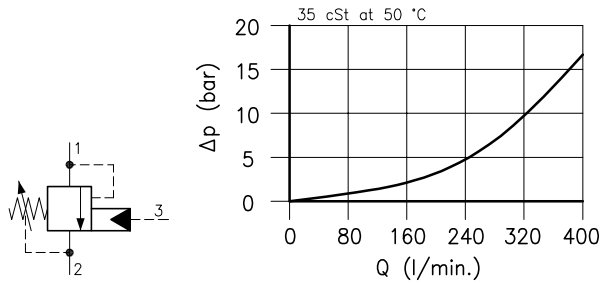


**Technical features**

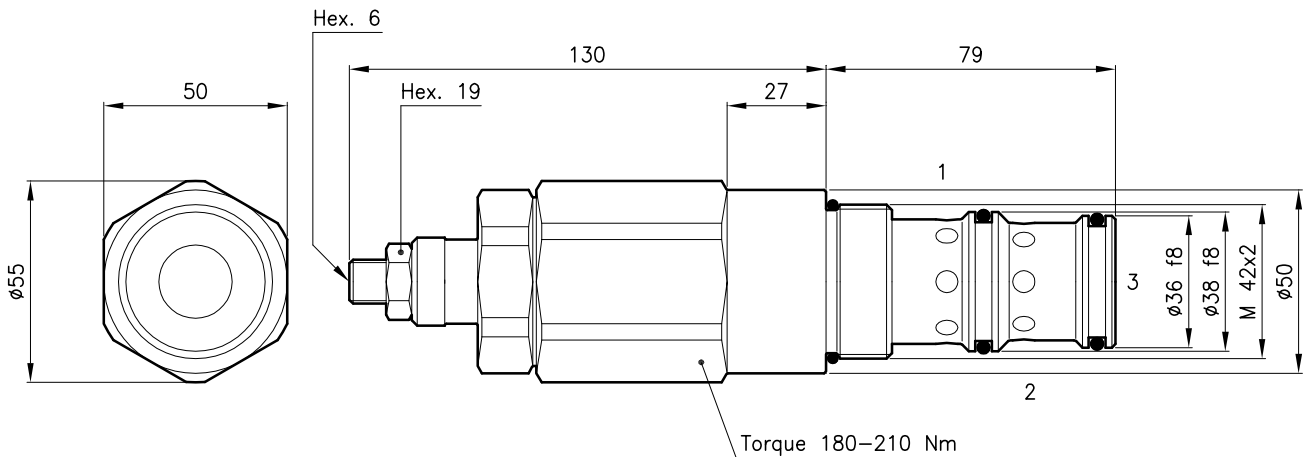


$$PP = \frac{(SP + BP) - LP}{3}$$

PP = Pilot pressure  
SP = Setting pressure  
BP = Backpressure port 2  
LP = Load induced pressure

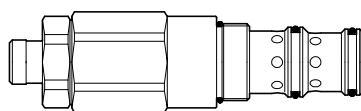
Cavity (For dimensions see catalogue 17.000)	S 70/3
Max. flow (l/min.)	360
Max. system pressure (bar)	270
Max. setting pressure (bar)	350
Pilot ratio	3:1
Fluid viscosity range (cSt)	2.8 - 380
Fluid temperature range (°C)	-20 +80
Mass (kg)	0.960
Cracking pressure 95% of setting value	
Reseat pressure 75% of setting value	
Standard setting obtained with 5 l/min.	
Hydraulic fluid; mineral oil HM and HV ISO 6074	
Recommended filtration; 19/15 ISO 4466 (25 μ absolutes)	
Standard seals in Polyurethane and Buna N	

**Dimensions**



**Ordering informations**

**CMS 70** = Valve type  
**CMS 70/T-N**



Standard springs

Type	Setting range	Factory set
<b>U</b>	10 - 105 bar	70 bar
<b>D</b>	70 - 210 bar	140 bar
<b>T</b>	140 - 350 bar	280 bar

Adjustment type

**N** = Standard adjustment



Codes:

CMS 70/U-N	74 011 101
CMS 70/D-N	74 011 102
CMS 70/T-N	74 011 100
External seals kit	90 620 120

CMS 70 valves can be assembled on standard bodies 70-C3 series; for dimensions see catalogue 16.010