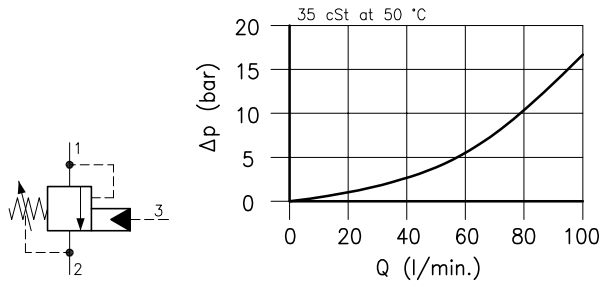


**Technical features**

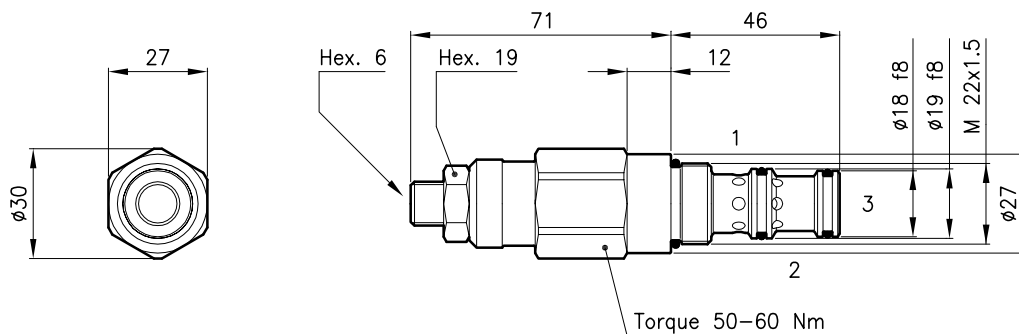


$$PP = \frac{(SP + BP) - LP}{2.7}$$

PP = Pilot pressure  
 SP = Setting pressure  
 BP = Backpressure port 2  
 LP = Load induced pressure

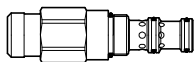
Cavity (For dimensions see catalogue 17.000)	S 30/3
Max. flow (l/min.)	90
Max. system pressure (bar)	270
Max. setting pressure (bar)	350
Pilot ratio	2,7:1
Fluid viscosity range (cSt)	2.8 - 380
Fluid temperature range (°C)	-20 +80
Mass (kg)	0.220
Cracking pressure 95% of setting value	
Reseat pressure 75% of setting value	
Standard setting obtained with 1 l/min.	
Hydraulic fluid; mineral oil HM and HV ISO 6074	
Recommended filtration; 19/15 ISO 4466 (25 μ absolutes)	
Standard seals in Polyurethane and Buna N	

**Dimensions**



**Ordering informations**

**CMS 30** = Valve type



Standard springs

Type	Setting range	Factory set
<b>U</b>	10 - 105 bar	70 bar
<b>D</b>	70 - 210 bar	140 bar
<b>T</b>	140 - 350 bar	280 bar

Adjustment type

**N** = Standard adjustment

**CMS 30/T-N**



Codes:

CMS 30/U-N	34 011 103
CMS 30/D-N	34 011 104
CMS 30/T-N	34 011 105
External seals kit	90 620 104

CMS 30 valves can be assembled on standard bodies 30-C3 series; for dimensions see catalogue 16.010