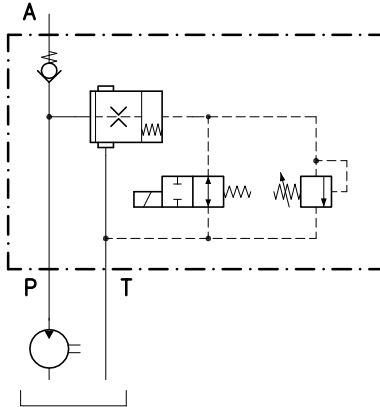


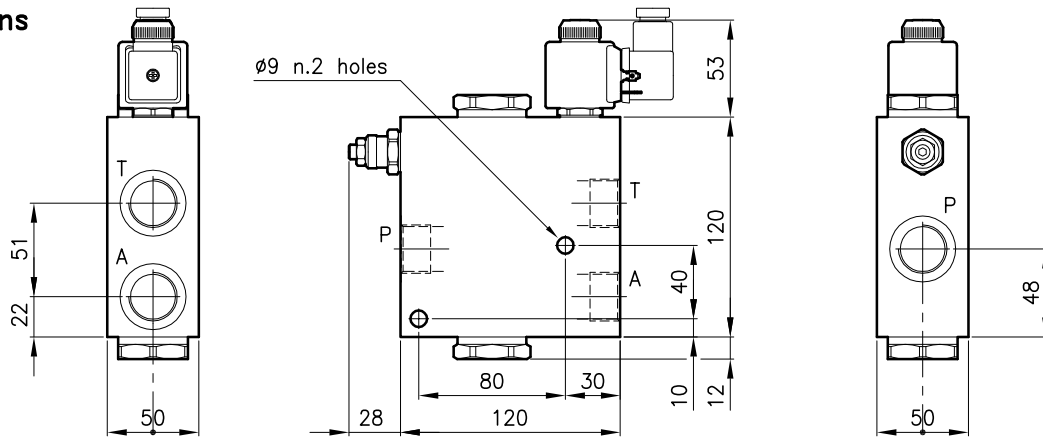
**Technical features**

They are used to unload a pump once a certain pressure has been reached or electrically.



Valves	(For features see catalogue 02.030)	LPS 20/20
	(For features see catalogue 11.020)	ELP 50/P1
	(For features see catalogue 05.070)	CAE 50/P
	(For features see catalogue 09.010)	ETD 20/2201
Max. flow	(l/min.)	135
Max. pressure in P	(bar)	420
Fluid viscosity range	(cSt)	2.8 - 380
Fluid temperature range	(°C)	-20 +80
Mass	(kg)	2.750
Hydraulic fluid; mineral oil HM and HV		ISO 6074
Recommended filtration; 19/15 ISO 4466 (25 μ absolutes)		
Standard seals in Polyurethane and Buna N		

**Dimensions**



**Ordering informations**

**DPE 50/D-N-12C-18H-HA-B12**

Valve type

Standard springs (LPS 20/20)

Type Setting range

**D** = 7 - 210 bar

**Q** = 105 - 420 bar

Adjustment type

**N** = Standard adjustment

**V** = Handknob adjustment

Voltage

**12C** = 12 Volt DC

**24C** = 24 Volt DC

**24A** = 24 Volt 50/60 Hz

**110A** = 110 Volt 50/60 Hz

**220A** = 220 Volt 50/60 Hz

Standard ports

**B12** = G 3/4 ISO 228

Connector DIN 43650

**HA** = standard for coils C

**HR** = rectifier for coils A

Coil type

**18H** = standard 18 Watt

Only body code:

Body type 50-DPE-B12

58 144 146