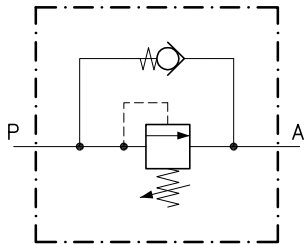


Technical features

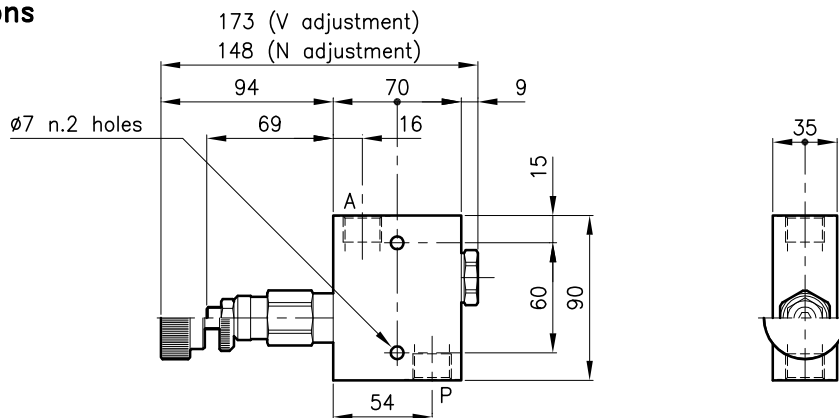
The main valve keeps closed till reaching set pressure, as this value gets over the valve opens and feeds the secondary circuit. The pressure required from secondary circuit adds to the setting pressure.

The annexed by-pass valve allows the reverse free-flow.



Valves	(For features see catalogue 02.070)	LPA 30
	(For features see catalogue 05.060)	CAE 30/P
Max. flow	(l/min.)	50
Max. pressure in P	(bar)	350
Max. pressure on A	(bar)	210
Fluid viscosity range	(cSt)	2.8 - 380
Fluid temperature range	(°C)	-20 +80
Mass	(kg)	0.990
Cracking pressure 90% of setting value		
Reseat pressure 80% of setting value		
Cracking pressure defined with 1 l/min.		
Hydraulic fluid; mineral oil HM and HV ISO 6074		
Recommended filtration; 19/15 ISO 4466 (25 μ absolutes)		
Standard seals in Polyurethane and Buna N		

Dimensions



Ordering informations

LPA 30/D-N-CSL 10-B08

Valve type

Standard springs

Type Setting range

U = 10 - 105 bar

D = 70 - 210 bar

T = 140 - 350 bar

Adjustment type

N = Standard adjustment

V = Handknob adjustment

Version

Standard ports

B06 = G 3/8 ISO 228

B08 = G 1/2 ISO 228

Codes:

LPA 30/U-N-CSL 10-B06 31 011 171

LPA 30/D-N-CSL 10-B06 31 011 172

LPA 30/T-N-CSL 10-B06 31 011 173

LPA 30/U-V-CSL 10-B06 31 011 174

LPA 30/D-V-CSL 10-B06 31 011 175

LPA 30/T-V-CSL 10-B06 31 011 176

LPA 30/U-N-CSL 10-B08 31 011 177

LPA 30/D-N-CSL 10-B08 31 011 178

LPA 30/T-N-CSL 10-B08 31 011 179

LPA 30/U-V-CSL 10-B08 31 011 180

LPA 30/D-V-CSL 10-B08 31 011 181

LPA 30/T-V-CSL 10-B08 31 011 182

Only body codes:

Body type 30-CSL 10-B06 38 144 127

Body type 30-CSL 10-B08 38 144 128