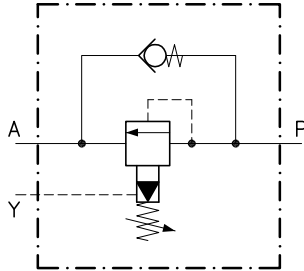


Technical features

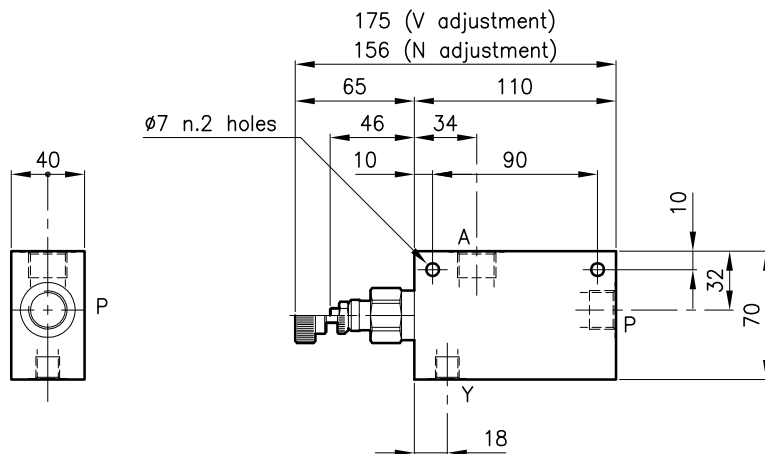
The line Y (drain line directly connected with the tank) makes the valve indifferent to port A pressure, keeping the setting features unchanged.

The annexed by-pass valve allows the reverse free-flow.



Valves	(For features see catalogue 04.040)	LPY 30
	(For features see catalogue 05.060)	CAE 30/P
Max. flow	(l/min.)	70
Max. pressure in P	(bar)	420
Max. pressure on A	(bar)	350
Fluid viscosity range	(cSt)	2.8 - 380
Fluid temperature range	(°C)	-20 +80
Mass	(kg)	0.990
Standard setting obtained with 10 l/min.		
Hydraulic fluid; mineral oil HM and HV ISO 6074		
Recommended filtration; 19/15 ISO 4466 (25 μ absolutes)		
Standard seals in Polyurethane and Buna N		

Dimensions



Ordering informations

LPY 30/D-N-CSL 10-B08

Valve type	
Standard springs	
Type	Setting range
D	= 10 - 210 bar
Q	= 105 - 420 bar
Adjustment type	
N	= Standard adjustment
V	= Handknob adjustment
Version	
Standard ports	
B06	= G 3/8 ISO 228
B08	= G 1/2 ISO 228

Codes:

LPY 30/D-N-CSL 10-B06	31 011 159
LPY 30/Q-N-CSL 10-B06	31 011 160
LPY 30/D-V-CSL 10-B06	31 011 161
LPY 30/Q-V-CSL 10-B06	31 011 162
LPY 30/D-N-CSL 10-B08	31 011 163
LPY 30/Q-N-CSL 10-B08	31 011 164
LPY 30/D-V-CSL 10-B08	31 011 165
LPY 30/Q-V-CSL 10-B08	31 011 166

Only body codes:

Body type 30-CSL 10Y-B06	38 144 129
Body type 30-CSL 10Y-B08	38 144 130