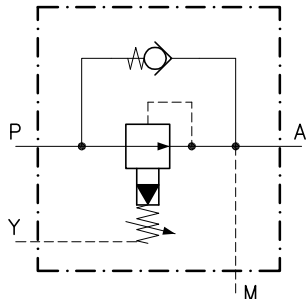
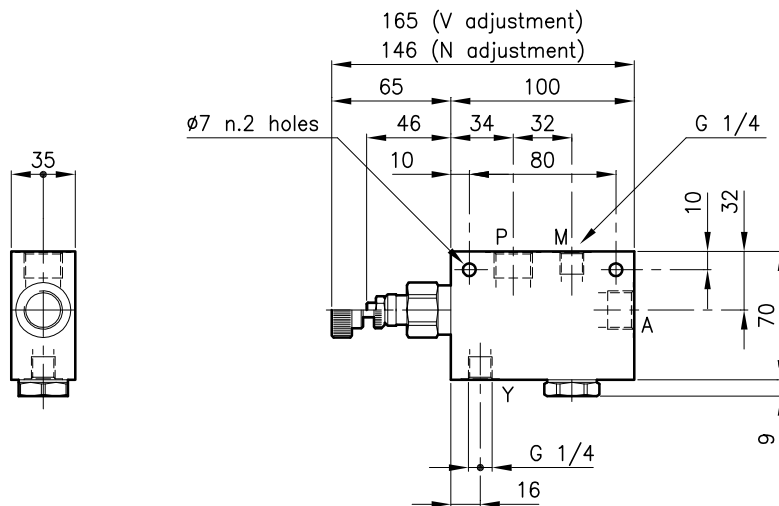


Technical features



Valves	(For features see catalogue 03.030)	RLY 30
	(For features see catalogue 05.060)	CAE 30/P
Max. flow	(l/min.)	40
Max. pressure in P	(bar)	420
Pressure setting range	(bar)	10 - 210
Fluid viscosity range	(cSt)	2.8 - 380
Fluid temperature range	(°C)	-20 +80
Mass	(kg)	0.980
Standard setting obtained with 1 l/min.		
Hydraulic fluid; mineral oil HM and HV ISO 6074		
Recommended filtration; 19/15 ISO 4466 (25 μ absolutes)		
Standard seals in Polyurethane and Buna N		

Dimensions



Ordering informations

RLY 30/D-N-CSL 11-B08

Valve type

Standard spring

Type Setting range

D = 10 - 210 bar

Adjustment type

N = Standard adjustment

V = Handknob adjustment

Version

Standard ports (P-A)

B06 = G 3/8 ISO 228

B08 = G 1/2 ISO 228

Codes:

RLY 30/D-N-CSL 11-B06 31 011 167

RLY 30/D-V-CSL 11-B06 31 011 168

RLY 30/D-N-CSL 11-B08 31 011 169

RLY 30/D-V-CSL 11-B08 31 011 170

Only body codes:

Body type 30-CSL 11-B06 38 144 125

Body type 30-CSL 11-B08 38 144 126