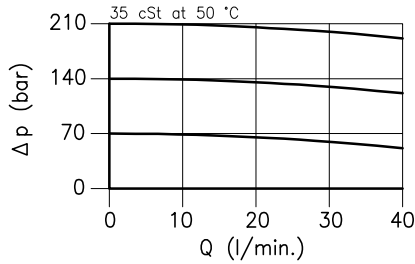
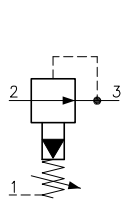
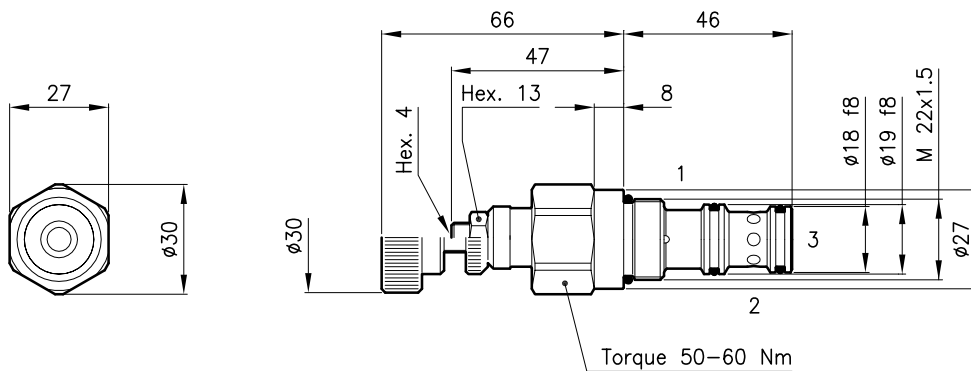


Technical features



Cavity (For dimensions see catalogue 17.000)	S 30/3
Max. flow (l/min.)	40
Max. inlet pressure (bar)	420
Pressure setting range (bar)	10 - 210
Max. drain (l/min.)	0.4 - 0.6
Fluid viscosity range (cSt)	2.8 - 380
Fluid temperature range (°C)	-20 +80
Mass (kg)	0.200
Standard setting obtained with 1 l/min.	
Hydraulic fluid; mineral oil HM and HV ISO 6074	
Recommended filtration; 19/15 ISO 4466 (25 μ absolutes)	
Standard seals in Polyurethane and Buna N	

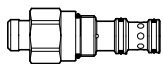
Dimensions



Ordering informations

RLY 30/D-N

RLY 30 = Valve type

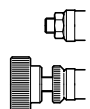


Standard spring

Type	Setting range	Factory set
D	= 10 - 210 bar	140 bar

Adjustment type

N	= Standard adjustment
V	= Handknob adjustment



Codes:

RLY 30/D-N	31 011 120
RLY 30/D-V	31 011 129
External seals kit	90 620 104

RLY 30 valves can be assembled on standard bodies 30-C3 series; for dimensions see catalogue 16.010