



PUMP SERIES 132000

FOR LUBRICATIONS SYSTEMS

CHARACTERISTICS

- **FLOW RATE:**
50 CM³ OF FLUID FOR EACH MOVEMENT OF THE LEVER;
- **PRESSURE: 35 BAR MAX.**

These robustly made units are simple, economical and easy to manoeuvre. They are particularly suitable for mounting on commercial barrels of varying capacities for transferring lubricating oils, soft greases, alcohol, gasoline, lacquer, oil, petroleum, solvents, asphalt emulsions and other non-corrosive or abrasive fluids.

They provide 50 g of lubricant per pump and can achieve a maximum back pressure of 35 bar.

Lubrication occurs during the lowering stroke of the control lever.

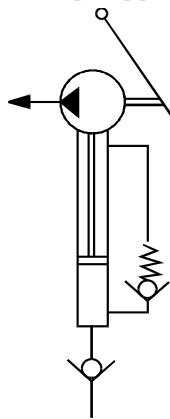
Once the operation is completed, the lever must be placed in its rest position (downwards), avoiding leakage of the lubricant from the pump by turning the knurled knob of the pin valve anti-clockwise.

Lubricant outlet 3/8" BSP cylindrical (female).

The pumps are supplied without a filter.



HYDRAULICS DIAGRAM



MAINTENANCE

The only maintenance required is the internal cleaning of the pump with petrol or oil (remove the pumping unit from the barrel). Scheduled maintenance is planned at one-year intervals, or more frequently when working in dusty environments or using additive lubricants.

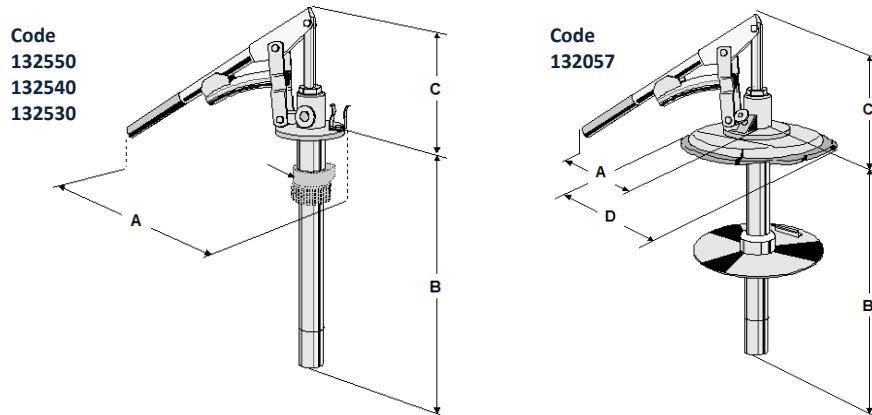
LUBRICANTS

Only use good quality lubricants, corrosive and solid, with good pumping characteristics (minimum penetration index 220/300 ASTM).

APPLICATIONS

- **USED FOR FILLING OF CENTRALISED PUMP RESERVOIRS.**

DIMENSIONS (DRAWING NOT TO SCALE)



DIMENSIONS				
CODE Pump	A - mm.	B - mm.	C - mm.	D - Internal Ø.
132057	390	375	190 -	316
132550	390	375	190 -	316
132540	390	515	190 -	380
132530	390	690	190 -	486



PUMP SERIES 132000

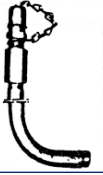
COMPONENTS

Item	Description	Code	Qty	Item	Description	Code	Qty
1	Lever	0132022	1	15	Elasticated	0016009	1
2	Gasket	0018821	1	16	Back cover	0132016	1
3	Bush	0132017	1	17	Washer	0132015	1
4	Standard	0113044	1	18	Gasket	0018838	1
5	Gasket	0132018	1	19	Piston	0132002	1
6	Gasket	0132019	1	20	Rod	*	
7	Gasket	0132020	1	21	Cylinder	*	
8	Washer	0132006	1	22	Pump body	0132001	1
9	Washer	0132008	1	23	Splint	0018741	3
10	Plug	0132033	1	24	Pin	0151020	3
11	Suction	0132010	1	25	Handle	0132025	1
12	Lower	0132005	1	26	Needle valve	0132021	1
13	Rod	0132009	1				
14	Hexagonal	0016404	1				

*See the table below

* PUMP	ROD (POS. 20)	CYLINDER POS. 21
132530	132508	132504
132540	132509	132505
132550	132510	132506
	132510	132506

Grease filling valve, code 132160. Connects directly to the pump outlet (3/8" BSP).



Nipple to connect pump to filter (3/8" BSP) code 133085



Grease filter with code 1113210 with \varnothing 3/8" BSP thread.

Filter cartridge with code 1113205.

Oil filter with code 1113240 with thread \varnothing 3/8" BSP. Filter cartridge with code 1113221.

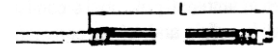


Flex with oil transfer valve
Code 101777 \varnothing flex pipe 13x23



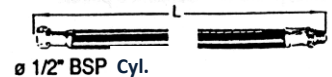
\varnothing 3/8" BSP con.

Flex without valve for transferring oils
Code 101778 - 5717300



\varnothing 3/8" BSP con.

Flex for filling pumps
Code 101779 \varnothing flex pipe 13x23



\varnothing 1/2" BSP Cyl.

\varnothing 3/8" BSP con.

To order a flexible hose, add the length L in cm (overall) to the part number.

ORDER INFORMATION

CODE PUMP	DESCRIPTION	CODE COVER	CODE PRESSURE DISK ONLY GREASE	PUMPIN ROD MM.
0132530	Commercial barrels of 115 Kg	1141530	1141130	690
0132540	56kg commercial barrel pump	1141520	1141131	515
0132550	20kg commercial barrel pump	1141545	1141140	375
0132057	20kg commercial barrel pump, with lid (code 1141545) and pressure disk (code 1141140)	supplied	supplied	375

ACCESSORIES

Follower plate	To be used when the pump is used for grease transfer. Grease consistency max. NLGI 1.
Cover	Designed for mounting this type of pump on the barrel to be replaced by the original cover.
Oil filter	Code 1113250 N.1 + Code 3077117 No. 2 \varnothing 3/8" BSP filter cartridge code 1113231
Grease filter	Code 1113210 No. 1 + Code 3077117 No. 2 \varnothing 3/8" BSP Filter cartridge code 1113205
Couplings	to join pump to filter 3/8 BSP code 0133085
Pipe for oil transfer with valve	\varnothing 13x23 tube code 0101777
Pipe for the transfer of oils, without valve	\varnothing 13x23 tube Code 0101778
Tube for loading grease pumps	\varnothing 13x23 tube code 0101779

Distributor Info:

C1078PE WK 51/18

Dropsa products can be purchased at Dropsa branches and authorised distributors. Go to www.dropsa.com/contact or write to sales@dropsa.com