

Beschreibung Description

- Schalldämpfer für Magnetventilausgänge und pneumatische Schwenkantriebe schützen das Produkt vor dem Eindringen von Staub und Schmutz und reduzieren den Lärm beim Entlüften

- Materialien:

- Sintermetall auf Messingverschraubung

- Polycarbonat blau

- Polycarbonat grau

- Ausführungen in NPT oder in Edelstahl auf Anfrage erhältlich

- Silencers for solenoid valve outlet ports and pneumatic part turn actuators protect the product against dust and dirt and they reduce the noise of the deaerating process

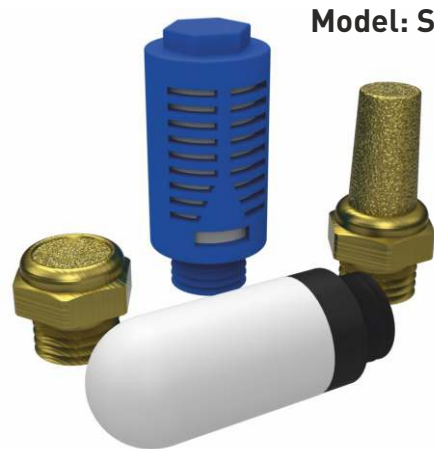
- Materials:

- Sintered metal on brass connection

- Polycarbonate blue

- Polycarbonate grey

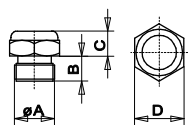
- NPT or stainless steel versions available on request



Model: SD

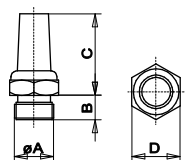


Messing-Schalldämpfer Brass silencers



-20°C...+150°C

	SDK1/8"	SDK1/4"	SDK3/8"	SDK1/2"	SDK3/4"	SDK1"
A	1/8"	1/4"	3/8"	1/2"	3/4"	1"
B	4,5	6	7	8	9	11
C	5	5	5,5	5,5	8	9,5
D	12	15	19	23	30	36
VPE*	25	25	10	10	10	10



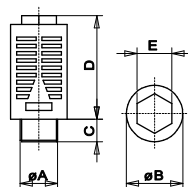
-20°C...+150°C

	SDLM5	SDL1/8"	SDL1/4"	SDL3/8"	SDL1/2"	SDL3/4"
A	M5	1/8"	1/4"	3/8"	1/2"	3/4"
B	3,5	4,5	6	7	8	9
C	13,5	16,5	21	28	32,5	42,5
D	7	12	15	19	23	30
VPE*	10	25	25	10	10	10

	SDL1"
A	1"
B	11
C	55
D	36
VPE*	10

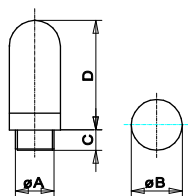
*VPE= Verpackungseinheit
VPE= Packing unit

Kunststoff-Schalldämpfer Plastic silencers



-20°C...+80°C

	SDLB1/8"	SDLB1/4"	SDLB3/8"	SDLB1/2"
A	1/8"	1/4"	3/8"	1/2"
B	15,5	19,5	24,5	24,5
C	6	8	11	11
D	27	35	47	47
E	10	12	16	16
VPE*	10	10	10	10



-20°C...+80°C

	SDLGM5	SDLG1/8"	SDLG1/4"	SDLG3/8"	SDLG1/2"
A	M5	1/8"	1/4"	3/8"	1/2"
B	7	13	17	25	25
C	4	5	6,5	7	8
D	20	23	27,5	57	57
VPE*	10	25	25	10	10

*VPE= Verpackungseinheit
VPE= Packing unit