

Protocol Converter: Modbus TCP to M-Bus

HD67044-B2 Serie - Available in 5 versions: 20-40-80-160-250 slaves

Protocol Converter HD67044 Serie:

Produced by ADFweb.com, is used like language converter from Modbus TCP Protocol to M-Bus and vice-versa, for read M-Bus instruments (Slave) from a Master Modbus TCP.

Modbus:

Is the protocol most frequently used in the industrial and civil automation for the communication with several devices connected in the same net. Defines the format and the communication mode between a Master, that control the system, and one or more slaves that answer to the master queries.

This can be, for example, a system for measuring temperature, humidity, pressure, hot and/or cold water, etc. .. and allows communication with PC/ PLC.

There are two types of Modbus, divided into the serial RTU and ASCII, and the one on Ethernet, the Modbus TCP.

M-Bus:

Is a specific protocol used for the reading of Energy, hot and cold water, gas, pressure, etc. ... of counters and totalizers.

Usually the M-Bus uses a specific physical connection (Physical Layer), but in some cases it uses a RS232 or RS485 [see HD67055].

Other Solution Protocol Converter Modbus / M-Bus:

Several solutions implemented to cover all the cases presented by the market:

- M-Bus / Modbus, for read Modbus instruments [slave] from a Master M-Bus [see HD67059M];

- Modbus / M-Bus, MultiMaster M-Bus allows to read M-Bus Slaves simultaneously from a Master M-Bus and from a Master Modbus [see HD67063].

Modbus TCP to M-Bus HD67044-B2

The products of HD67044-B2 series are protocol converter between Modbus TCP and M-Bus. They allow to save on Modbus registers the informations of M-Bus Slaves devices and then make these values available to a Client Modbus.

The Modbus connection is through Ethernet.

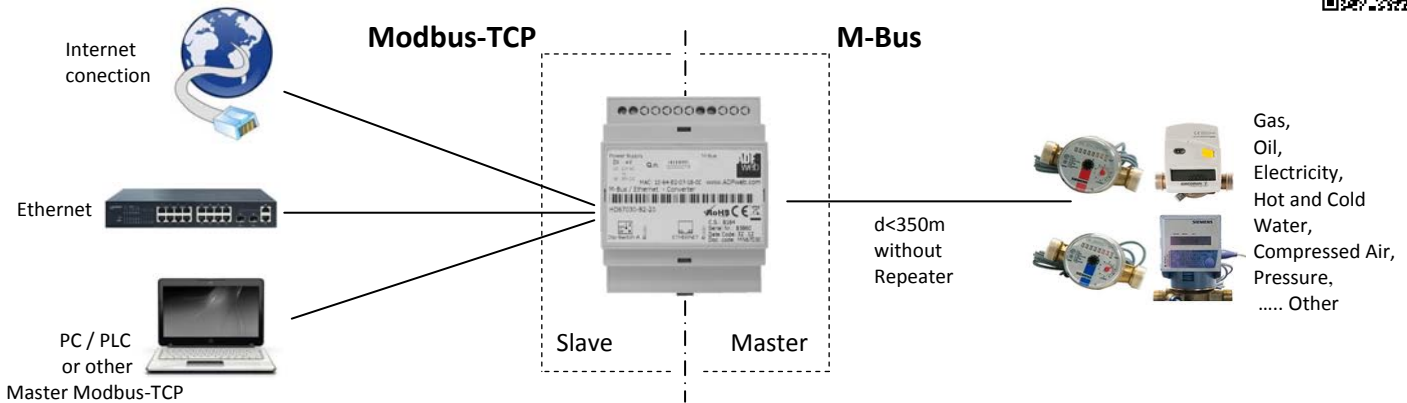
The converter is Slave at Modbus TCP side and Master at M-Bus side.

The M-Bus Master allow to connect and to feed up to 250 slaves for length of 350m.

For longer lengths, or with more than 250 slaves, the use of repeaters field [HD67032M series] is suggested.

- European standard EN 1434
- Microprocessor control
- Scalable da 1 a 250 slaves
- Galvanic isolation between Modbus TCP and M-Bus
- 35 mm DIN rail mounting
- Settable transmission speed from 300 to 38400 baud
- AC/DC Power supply

Quick
PRICE



Order Code	HD67044-B2-20	HD67044-B2-40	HD67044-B2-80	HD67044-B2-160	HD67044-B2-250
Technical data:	20 slaves	40 slaves	80 slaves	160 slaves	250 slaves
Operating voltage:	18V .. 35V DC 15V .. 21V AC	18V .. 35V DC 15V .. 21V AC	18V .. 35V DC 15V .. 21V AC	18V .. 35V DC 15V .. 21V AC	18V .. 35V DC 15V .. 21V AC
Consumption single slave:	1,5 mA	1,5 mA	1,5 mA	1,5 mA	1,5 mA
Min / Max-load consumption:	3,5W / 4W	3,5W / 5W	3,5W / 8W	3,5W / 14W	3,5W / 30 W
M-Bus voltage (without load):	38V	38V	38V	38V	38V
Max. M-Bus quiescent current:	30mA (20 unit loads)	60mA (40 unit loads)	120mA (80 unit loads)	240mA (160 unit loads)	375mA (250 unit loads)
Overcurrent threshold:	250mA	250mA	250mA	500mA	500mA
Trasmission speed M-Bus:	300 .. 38.400 baud	300 .. 38.400 baud	300 .. 38.400 baud	300 .. 38.400 baud	300 .. 38.400 baud
Ethernet:	10 / 100 MHz	10 / 100 MHz	10 / 100 MHz	10 / 100 MHz	10 / 100 MHz
Connector type:	RJ45	RJ45	RJ45	RJ45	RJ45
Galvic Isolation to M-Bus:	yes	yes	yes	yes	yes
Temperature range °C / °F:	-40/+85°C [-40/+185°F]	-40/+85°C [-40/+185°F]	-40/+85°C [-40/+185°F]	-40/+85°C [-40/+185°F]	-40/+85°C [-40/+185°F]
Dimensions DxWxH	106x60x95 mm	106x60x95 mm	106x60x95 mm	106x63x95 mm	106x75x95 mm



ADFweb.com srl
Strada Nuova, 17
31010 Maren di Piave
Treviso — ITALY
www.adfweb.com

Tel. +39-0438-30.91.31
Fax +39-0438-49.20.99
Id. Tax IT-0385360262
info@adfweb.com

QR—quick response
(matrix code)

info Modbus TCP to M-Bus
HD67044-B2 serie

